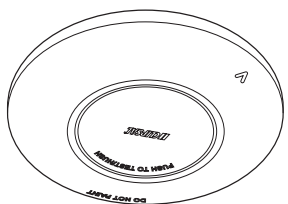


# FIRETEK Smoke alarm

755LPSMA4

Lithium Battery Powered Photoelectric Smoke Alarm with Wireless Interconnect



**CLIPSAL**  
by Schneider Electric

## More information is available

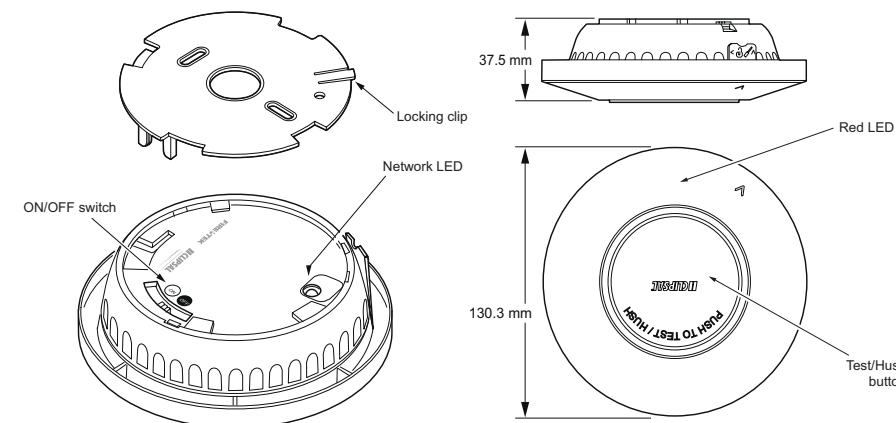


[https://download.schneider-electric.com/files?p\\_Doc\\_Ref=EAV8159103](https://download.schneider-electric.com/files?p_Doc_Ref=EAV8159103)

Scan the QR code for more information about your Clipsal smoke alarm:

- What smoke alarms can and cannot do
- Developing and practising a plan of escape
- What to do if an alarm sounds.

## Operating elements

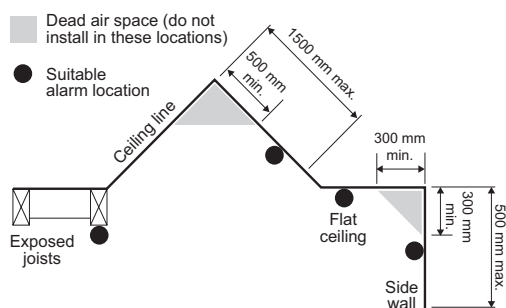


## Installation location

Install more than 1 m away from air conditioner/heater vents and fans, electrical sources, appliances and fittings.

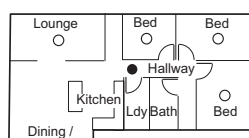
Do not install in garages, kitchens, bathrooms or any area with high levels of moisture, dirt or insects.

**For garages:** A heat alarm is more suitable as it is not affected by particulates.



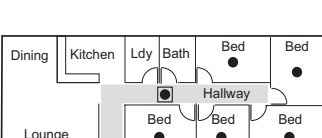
**Example: Class 1a building**

- Smoke alarm
- Recommended additional alarms (or as required by legislation)



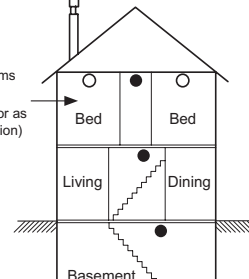
**Example: Class 1b building**

- Smoke alarm
- Smoke alarm with evacuation lighting



**Stores with bedrooms:**

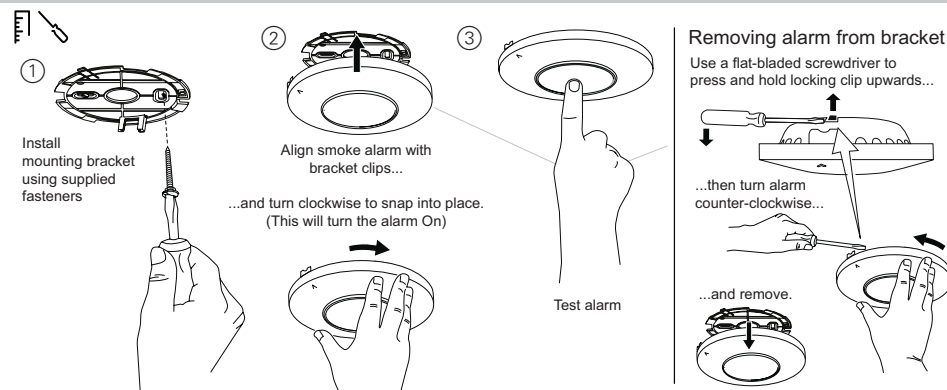
- Alarm in hallway connecting bedrooms
- Recommended additional alarms (or as required by legislation)



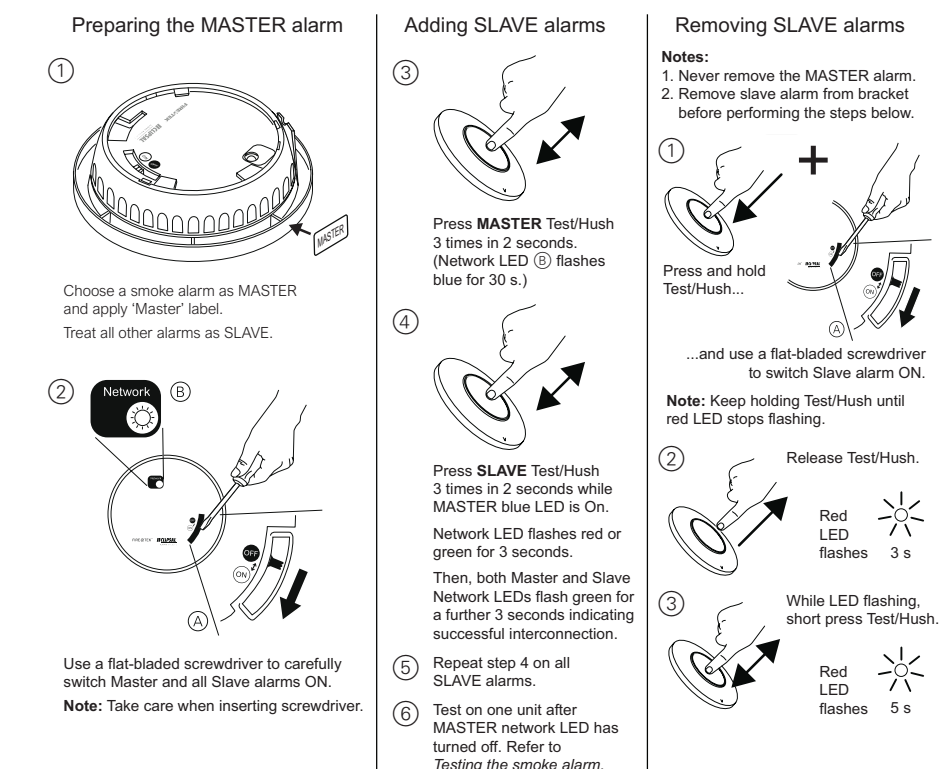
**Stores with no bedrooms:**

- Alarms located in the area of the stairway.

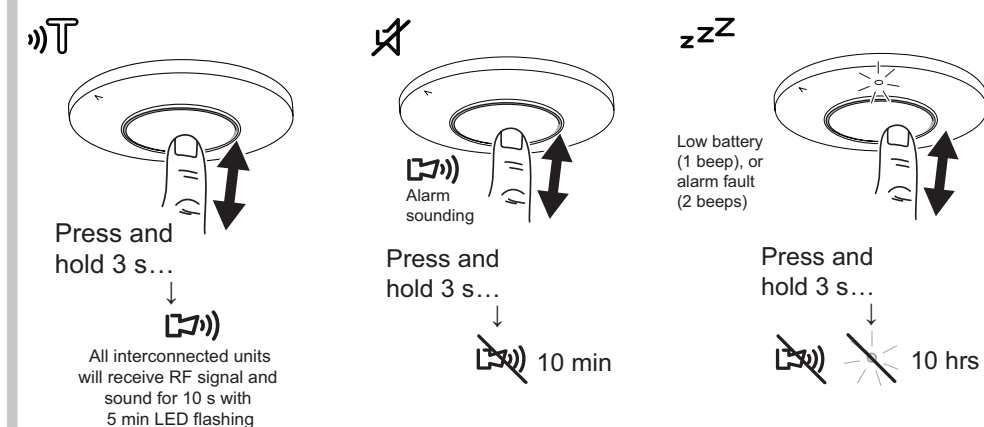
## Installation



## Interconnected alarms (do this before mounting alarms)



## Operating the smoke alarm



## General information

- Leave these instructions with the occupant, to be retained for the life of the alarm.
- It is recommended that this smoke alarm be installed by a licenced electrician.
- Do not remove dust cover until 24 hours after all construction has been completed. Construction dust and chemicals can cause contamination and false alarms.
- **Important:** Dust cover must be removed before smoke alarm will operate correctly.

## For your safety

**CAUTION**

**EQUIPMENT INSTALLATION HAZARD**

- This product must only be used for the purpose described in these instructions and must be installed in accordance with the wiring rules and regulations in that location.
- Ensure the product has been correctly installed and tested for safe operation.
- Only install indoors.
- The 755LPSMA4 is wirelessly compatible with wireless base 755RFB2.
- **The 755LPSMA4 is NOT compatible with wireless base 755RFB.**
- Check the function and wireless interconnection on each smoke alarm.
- Test each wireless interconnected unit 1 by 1. Press and hold the Test button until second burst of 3 beeps has finished. If any unit fails to alarm, check all wireless connections.
- Press and hold the Test/Hush button on one smoke alarm until it sounds, then check that the red LED is flashing on all interconnected smoke alarms.

**Failure to follow these instructions may result in injury or equipment damage.**

## Operating elements

- Network LED (wireless pairing indication: yellow/blue and green: master and slave pairing modes).
- Red LED (low battery, alarm, test and hush indicator). The LED is located within the smoke alarm casing and is visible when On.

## Choosing the installation location

**NOTICE**

**EQUIPMENT INSTALLATION COMPLIANCE**

This smoke alarm must be installed in accordance with the National Construction Code and any local state legislation requirements.

**Failure to follow these instructions may result in a non-compliant installation.**

**i** Prior to installing, ensure there are no obstructions in ceiling mounting locations, such as pipes or cables.

- Only install smoke alarm indoors in a stand-alone or wireless interconnected set up (see *Interconnected alarms*).
- Set up wireless interconnection before installing the alarms (see *Interconnected alarms*).
- Do not remove the dust cover until you are ready to test the unit. See ⇨

## Interconnecting smoke alarms

⇨ (see *Interconnected alarms*)

Wireless interconnection on the 755LPSMA4 smoke alarm is designed for easy installation and no wiring is required. An optional wireless base (Catalogue No. 755RFB2) can be purchased separately to wirelessly interconnect with Gen 2 and Gen 4 surface mount mains powered Clipsal smoke alarms.

**i** Always test alarm system operation after interconnected smoke alarms are added or removed.

**NOTICE**

**EQUIPMENT INSTALLATION HAZARD**

- Maximum of 40 interconnected smoke alarms.
- Only Clipsal 755LPSMA4 smoke alarms and Clipsal smoke alarms connected to the 755RFB2 base are compatible for interconnection with this alarm.

**Failure to follow these instructions may result in injury or equipment damage.**

## Mounting the smoke alarm

## Operating the smoke alarm

**Testing the smoke alarm**

⇨

## Network LED

Operating mode	Network LED	Duration
<b>INTERCONNECT</b>		
Master alarm in pairing mode	Blue, flashing	30 s max. or until pairing successful
Slave alarm in pairing mode (first time)	Red, flashing	3 s
Slave alarm in pairing mode (previously paired)	Green, flashing	3 s
Master and slave alarm pairing successful	Green, flashing	3 s
Master alarm after pairing completed	Blue, flashing	30 s
Slave alarm pairing unsuccessful	Green, flashing	30 s or more beyond pairing time

## Troubleshooting

Problem	Resolution/Action
Smoke alarm does not sound when tested	<ol style="list-style-type: none"> <li>1. Make sure POWER is ON. Fit the smoke alarm on the bracket and turn the alarm body clockwise until a click is heard.</li> <li>2. Press <b>Test/Hush</b> button until it sounds. Do not quick press.</li> <li>3. If problem persists, refer to <i>Warranty</i> section, and replace smoke alarm. If out of warranty, replace with new smoke alarm.</li> </ol>
Smoke alarm beeps and red LED flashing once every 40 seconds	Battery is in low voltage condition. Replace the smoke alarm.
Smoke alarm beeps once without red LED flashing	<ol style="list-style-type: none"> <li>1. Clean smoke alarm. Refer to <i>Maintenance, Repairs and Service</i>.</li> <li>2. If problem persists refer to <i>Warranty</i> section, and replace smoke alarm. If out of warranty, replace with new smoke alarm.</li> </ol>
Smoke alarm sounds unexpectedly when smoke or steam is present	<ol style="list-style-type: none"> <li>1. Identify the smoke alarm that has initiated the alarm indicated by a flashing red LED and sound warning of three beeps every seconds.</li> <li>2. Press <b>Test/Hush</b> button on the smoke alarm to pause the alarm. Interconnected alarms will stop sounding in 5 to 10 seconds.</li> <li>3. To clean smoke alarm refer to <i>Maintenance, Repairs and Service</i>.</li> <li>4. Move smoke alarm to a new location and test.</li> </ol>
Nuisance/false alarm (Smoke alarm sounds without any smoke present)	<ol style="list-style-type: none"> <li>1. Identify the smoke alarm that has initiated the alarm indicated by a flashing red LED and sound warning of three beeps every seconds.</li> <li>2. Press <b>Test/Hush</b> button on the smoke alarm to pause the alarm. Interconnected alarms will stop sounding in 5 to 10 seconds.</li> <li>3. Clean smoke alarm. Refer to <i>Maintenance, Repairs and Service</i>.</li> <li>4. If problem persists refer to <i>Warranty</i> section, and replace smoke alarm. If out of warranty, replace this alarm only.</li> </ol>

## False Alarm

In the event of a false alarm in an interconnected group, it is important to identify the triggering alarm(s). These alarms may need to be cleaned, serviced or replaced if necessary.

When alarms are sounding without any smoke present:

- Identify which smoke alarm/s are being triggered – Look for the alarm/s with sound and red LED flashing.
- Unclip all identified smoke alarms, then all interconnected alarms will stop alarming in 1 minute.
- Clean smoke alarms in accordance with the *Maintenance, Repairs and Service* section.
- Re-install and test all the smoke alarms.

If all of the above fails, contact a licenced electrician for replacement.

## Maintenance, Repairs and Service

### Maintenance

It is recommended that the smoke alarm is inspected monthly to ensure it is free from dirt, dust and insects. The alarm can be vacuumed or brushed with a soft brush to remove dust, dirt or kitchen grease that has accumulated. Apply a small amount of insect surface spray to a cloth and wipe around alarm/s every 3–6 months to mitigate insect ingress.

### ALWAYS TEST THE SMOKE ALARM AFTER CLEANING

### Repairs and Service

**NOTICE**

**EQUIPMENT MAINTENANCE INSTRUCTIONS**

- Test this smoke alarm regularly to ensure the unit is functional and that the battery is in good condition.
- Replace the smoke alarm 10 years after date of manufacture.
- Do not open the smoke alarm casing or repair the smoke alarm yourself. There are no user-serviceable parts inside.

**Failure to follow these instructions may result in equipment malfunction or failure.**

## Disposal

As the smoke alarm does not contain any radioactive material, disposal with normal rubbish is permitted in Australia and New Zealand.

Before disposal, move the battery disconnect switch to the disconnect position. This will prevent the low battery warning beep when the battery eventually discharges.

## Technical data

Battery Life	10 years
Operating Current	≤70 mA
Sensing Type	Photoelectric. This alarm contains NO radioactive material.
Operating Temperature	0 °C to 45 °C
Ambient Humidity	5% to 95%
Interconnecting	Wireless, 40 alarms maximum
Transmit Frequency	433.42 MHz
RF Range	140 m free air, 50 m indoor line of sight
Wireless Response Time	Within 30 seconds
Horn Level	85 dB at three metres minimum
Mounting Type	Ceiling and wall mount only
Approvals	Activfire SAI Global RCM
Complies with	AS 3786 AS/NZS 60065

It is recommended to dispose of this device at an authorised electronic waste collection point. Professional recycling protects people and the environment against potential negative effects.

## Trademarks and certifications

Schneider Electric acknowledges that the Australian Standard Certified Product logo is a trademark of SAI Global, and that the Activfire Certified logo is a trademark of CSIRO.



## Warranty

We warrant this product to be free from defects in materials and workmanship for a period of 5 (five) years from the date of installation.

## Customer care

If you have technical questions, please contact the Customer Care Centre in your country.

### Australia

**Schneider Electric (Australia) Pty Ltd**  
Customer Care Australia: 13 73 28  
e: [customercare.au@schneider-electric.com](mailto:customercare.au@schneider-electric.com)  
[www.schneider-electric.com.au](http://www.schneider-electric.com.au)

### New Zealand

**Schneider Electric (NZ) Ltd**  
After hours service: 0800 735 4357 (NZ only)  
Customer Care NZ: 0800 652 999  
e: [sales@nz.schneider-electric.com](mailto:sales@nz.schneider-electric.com)  
[www.schneider-electric.com](http://www.schneider-electric.com)